



Meola Creek 2009 Update

STEPS (St Lukes Environmental
Protection Society Inc)

Presentation to Auckland City
Development Committee

9 July 2009



Agenda

- Background
- 2008-9 Meola Progress
- Current Issues
- Future



Background

Meola Catchment

Flows to Waitemata Harbour
- feeds protected Meola Reef

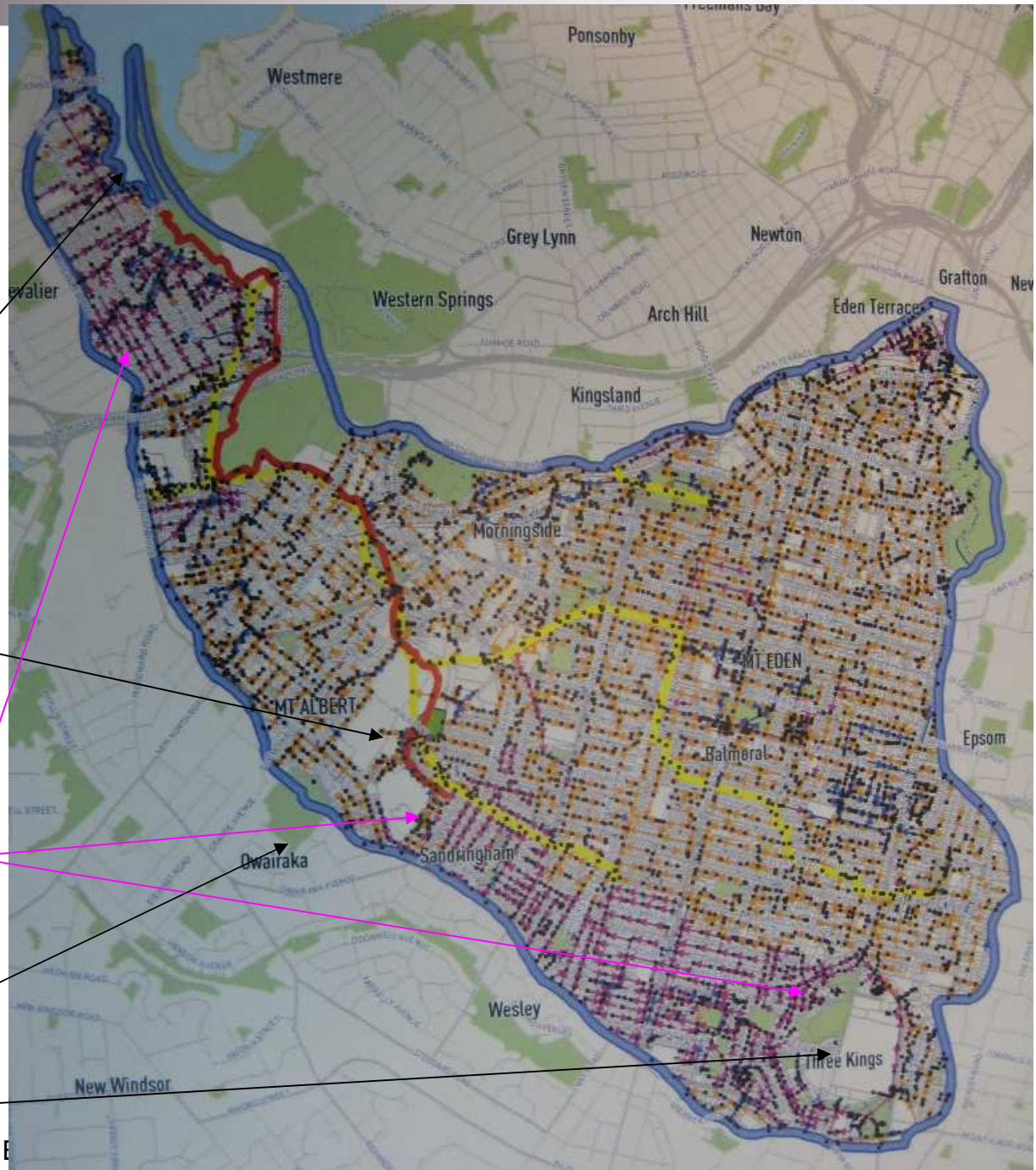
Upper Meola,
Kerr Taylor Reserve


Combined sewers in pink

Owairaka Mt Albert

Three Kings

St Lukes B





St Lukes Environmental Protection Society (STEPS)

- Incorporated 2005
- 28 members and 47+ registered supporters
- Focus on St Lukes area

Notes:

- St Lukes already has many residential developments under way and just completed
- Sandringham is a potential growth node – limited by infrastructure
- STEPS received \$1000 from Eden Albert in 2005 and 2007; and \$900+ for planting in 2008. Also EIF in 2009



STEPS Aims

1. To enhance and **improve the Kerr Taylor Reserve** as an open space for use by the people of the St Lukes-Mt Albert area, through working with the Community Board, the Auckland City Council, schools and other groups.
2. To see the **quality of the water in Meola Creek improved**, and the public health, environmental and cultural values increased, through working to ensure that the Auckland City Council, Watercare Services and Metrowater improve the water quality and upgrade inadequate drainage and sewerage systems.
3. To **maintain or expand the extent of the existing open spaces and walkways** in the St Lukes area, through working with all groups who have an interest in the area.

Upper Meola Creek – between Westfield St Lukes Mall and “DSIR” on foothills of Owairaka/ Mt Albert



Ducks in Meola Creek

12 March 2008





Auckland City Council Media release

- *City Development Committee passed a resolution and issued a press release when last we spoke (May 08)*
<http://www.meolacreek.org.nz/2008/05/13/work-planned-to-ease-meola-creek-pollution/>

9 May 2008

“Work planned to ease Meola Creek pollution

A programme of works is to be developed to help mitigate the impacts of sewer overflows into Meola Creek.

The City Development Committee heard that a long-term solution under consideration by Watercare, the installation of a new interceptor main, is not likely to be operational for about five to 10 years.

In the meantime, the committee has asked the council, Metrowater and Watercare to move ahead with initiatives to minimise the problem...”



Meola Creek 2008-9 Update

Meola in MAGS 2008



Meola Creek – planting 2008



- STEPS together with Metrowater, planted Meola Creek banks with over 5000 more native plants. This will improve health of the creek and its wildlife.

Meola Creek – MAGS plantings 2008





Upper Meola Progress 2008-9

- Community planting of creek on MAGS land – Sep 2008 4000+ plants
- Growth of plantings along creek from 2007
- Metrowater boardwalk is a success - more secure and used more times by more people
- Boardwalk is above summer floods – pictures from 2 storm events – Dec 24 and Feb 20

New Boardwalk and Weir

- Weir filled up after only 2 flood events
- Water is crystal clear
- Morphum received the Arthur Meade award
- *Thanks to David Bowden (AC) and Melissa Marler (Waicare) for planting support*

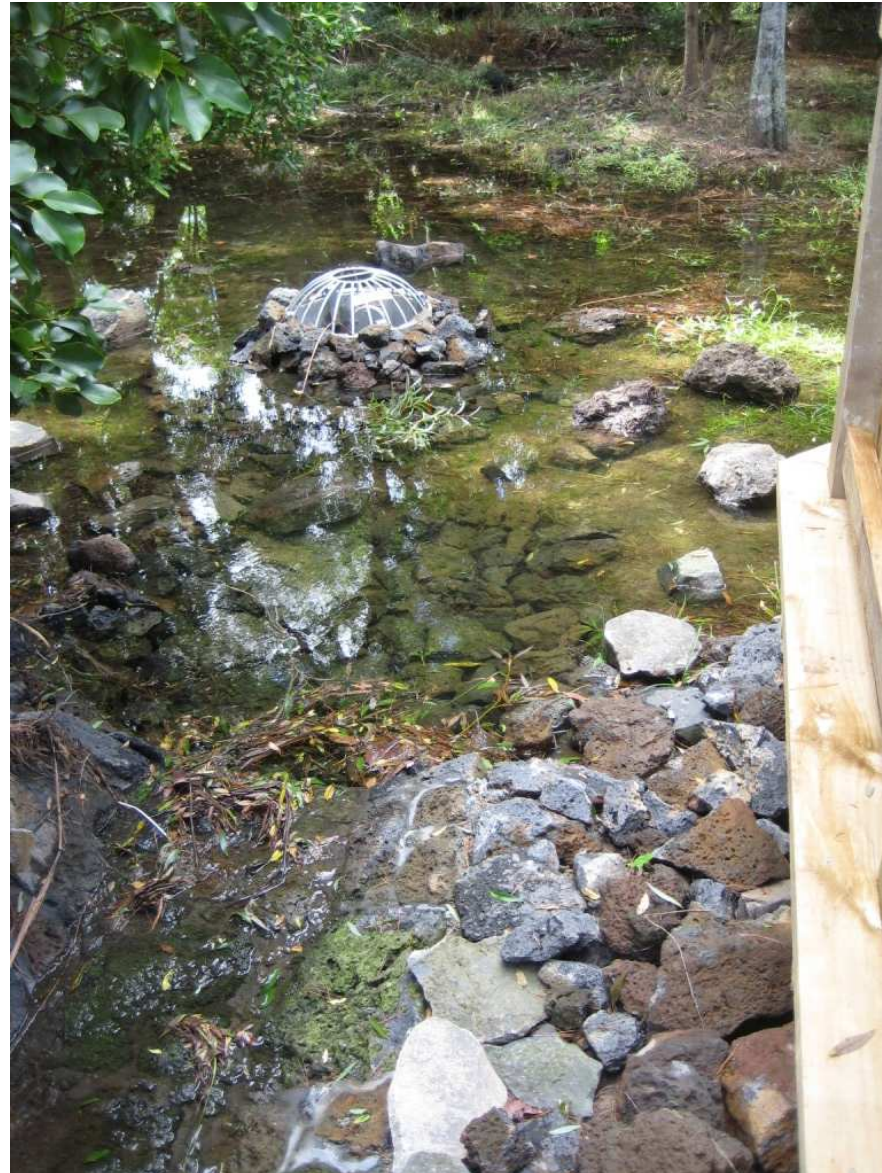


Photo 1 March 2009

Wetland and Springs



Wetland planting day held 9-10 May 2009

St Lukes Environmental Protection Society (STEPS)

9 July 09

Community restores a Meola Wetland


- STEPS initiative
- MAGS land
- ARC EI Funding
- 2000 plants
 - Planted by volunteers



Nick Goldwater May 2009

District plan





Water in District Plan, Auckland Governance

- STEPS and Friends of Oakley Creek submitted
 - to Auckland City – a proposal for protection of Creeks in District Plan
 - More work needed
 - to Auckland Governance Hearings this week about management of water

 - City Council planning maps
 - now show creeks – whereas 6 months ago they were unmarked and invisible
 - Meola Creek partially on map
 - Ecological corridor – in golf course
 - More appropriate zoning for land near creeks
- And



Meola Improvement Projects

- Thanks to Auckland City - Mike McQuillan and Murray Menzies
- With Murray's help STEPS developed a number of project briefs to address different aspects of Meola Creek problems.
 - <http://www.meolacreek.org.nz/2009/04/09/meola-creek-restoration-projects/>
- **We need to progress these with Auckland City**
- Other project partners are also being sought by STEPS eg HNZC



Current Issues and Changes



Current Issues

- 1 St Lukes Westfield plan change
- 2 Three Kings – Meola - Western Springs Aquifer
- 3 HNZC Haverstock



St Lukes Westfield Plan Change

- SLRA have opposed it – several hundred submissions made
- Westfield plan, as with recent resource consent decision for 24 St Lukes Rd, once again states there is adequate capacity in the sewer – but which sewer?

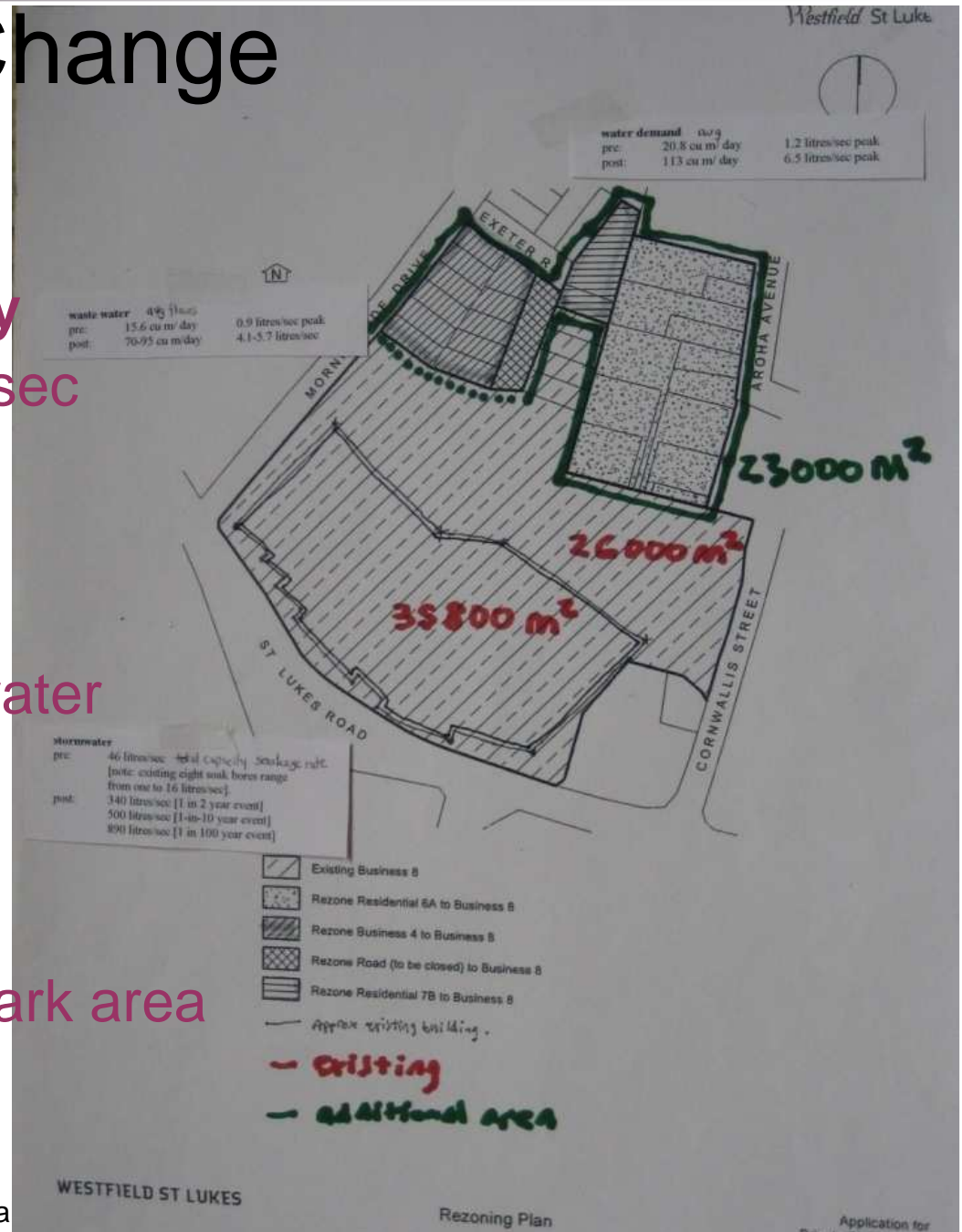
Meola Creek – 1 October 2006 Flood



Lyon Ave WCS sewer outfall under St Lukes Megacentre is normally dry

St Lukes Plan Change

- 50% larger footprint
- Stormwater increases by 10-20 times from 46 Litres/ sec now to 500 (10 year event) or 890 (100 year event)
- Water usage and waste water peak and average flows about 5 times higher
- Drainage of existing car park area does not meet standards



Three Kings – Meola Aquifer



1998 photo – water is approx 2 meters above water table (approx 56 RSL)

Three Kings – Meola Aquifer?




May 2009 - water is normally maintained at 34 RSL
Dewatering involves pumping from Meola aquifer into Manukau
St Lukes Environmental Protection Society (STEPS)

9 July 09



Three Kings Meola Aquifer

- Winstones propose:
 - filling an UNLINED pit
 - continued pumping or dewatering
- STEPS is concerned about Meola Impacts
 - High possibility of aquifer contamination from fill
 - Continuing loss of water from aquifer to Manukau
 - Low base flows

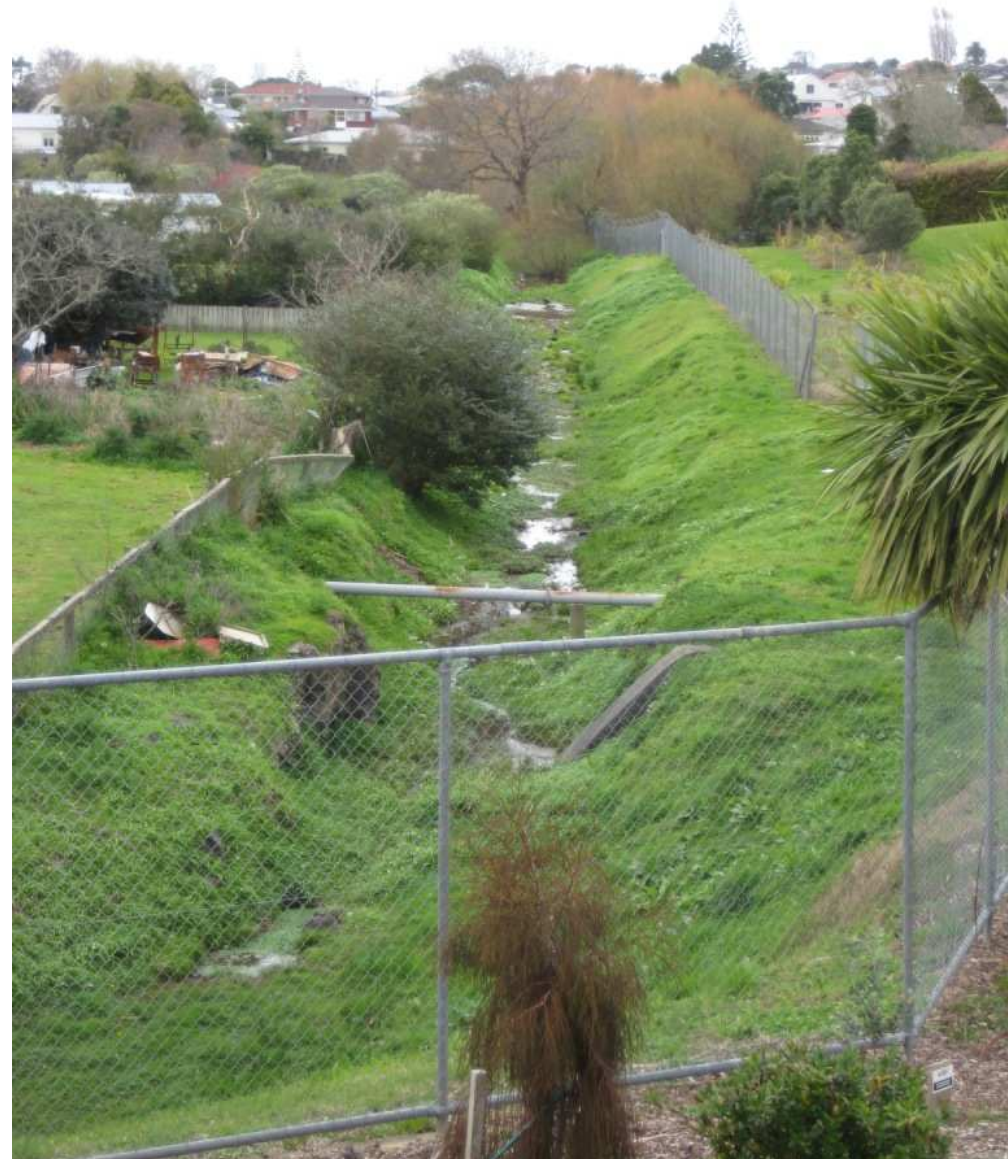


Meola Creek – Haverstock Rd

- Planned intensification by HNZN 94-130 Haverstock Rd
 - Includes diversion of Meola creek so 22 more new units can be built, at least one on flood plain and in existing creek channel
 - Impermeable surface area increased – and stormwater volumes
 - Site of large Water Care Services overflow
 - Overflows including raw sewage flowing through Meola Creek 1528032 cu m/ year [or 611 Olympic swimming pools per year - nearly 2 per day] on average.
 - Nearly half of these come from 96 Haverstock Rd

Upper Creek

- Housing NZ on left
- STEPS approached ARC about daylighting creek (not sewage)





Future



Futures – with ACC help

- Need funded plans to stop overflows through the creek (ACC, WCS and Metrowater)
 - Sewer separation – Meola should be next
 - Interceptor and sewage plant upgrade by WCS
- Protect creek
 - Management Plan for Meola Creek
 - How to protect Meola and other creeks in the District plan?
- EACB
 - Approve plans for Kerr Taylor Reserve planting (SLIPS plans drafted not approved)
 - Approve Meola Signage project – also SLIPS