

TŌ TĀTOU TĀMAKI MAKĀURAU OUR AUCKLAND

Whiringa-ā-nuku October 2017 | 74

Live
Lightly

Property revaluations
Improving water quality

THIS MONTH

Local news p4-5

Live Lightly p6-8

Gem of the month p11

Events – back section

- Halloween

- School holidays

- Diwali Festival

- Artweek

Cover: Keeping chickens is just one way Vanessa King is living lightly. See p8 for her story, and p6-7 for other ideas for living lightly. **Right:** Soakai Malamala performs at the Stand Up Stand Out competition in September.

Keep your eyes peeled ...

Look out for this symbol for small choices you can make every day to help you save money, stay healthy and look after the planet.



IN BRIEF

Labour Day rubbish and recycling collections

Collections will be one day later from Monday 23 October, with normal collections resuming on Monday 30 October. Rubbish and/or recycling normally collected on 27 October will be collected on 28 October. Visit makethemostofwaste.co.nz to check your collection dates and for more information.

Auckland Marathon

The ASB Auckland Marathon is on Sunday 29 October. A number of road closures and parking restrictions will be in place, and there will be some changes to public transport schedules. Visit at.govt.nz to plan your travel and for more information.

Joining is free for October at Auckland Leisure

Exercise is good for your body, but it's even better for mental health. Spring clean your mind at Auckland Council Pools and Leisure with this great offer: sign up to your local leisure centre during the month of October and you'll pay no joining fee. Visit aucklandleisure.co.nz to find out more.



Message from the mayor

Long-overdue changes are starting to happen in Auckland. We are embarking on ambitious plans to clean up the quality of water at our beaches, give our lowest-paid workers a fair wage and implement changes needed to combat traffic congestion.

On 1 November our new Safeswim programme comes into force. Auckland becomes the first city in New Zealand to provide its residents with transparent and accurate real-time information on the quality of water at our main beaches.

The current system follows nationwide guidelines that give information that is out of date and not comprehensive.

One thing this will highlight is that with wastewater overflowing



into streams and beaches whenever it rains, far too many of our beaches are below safe swimming levels.

We will soon be announcing a multibillion-dollar plan to clean up our water. It's well overdue and it's time to deliver 21st century standards for a world-class city.

It's our responsibility as Aucklanders to meet the cost of this, largely through our water

charges. Most people I talk to agree that if that is the price of cleaning up our streams and beaches, we need to do it.

Kind regards,

Phil Goff
Mayor of Auckland

CONTACT US

Auckland Council

aucklandcouncil.govt.nz
09 301 0101 (24/7)
enquiry@aucklandcouncil.govt.nz
Auckland Council, Private Bag 92300, Auckland 1142
[facebook.com/aklcouncil](https://www.facebook.com/aklcouncil)
twitter.com/aklcouncil

Rubbish and recycling, rates information, local board enquiries, noise control, dog ownership, graffiti removal and much more.

Visit us

We have more than 25 customer service centres throughout the Auckland region. Services vary between branches, so visit our website or call us to check.

OurAuckland

OurAuckland keeps you up to date with council services, projects and events, and helps to fulfil our legislative obligations to keep Aucklanders informed. We conduct regular research to ensure *OurAuckland* is an efficient way of doing this.
ourauckland@aucklandcouncil.govt.nz

Te reo Māori

We're proud to use te reo Māori in *OurAuckland*. If you come across a word you don't know you can learn what it means at maoridictionary.co.nz

Council meetings

Auckland Council's governing body and local boards hold monthly meetings that you can attend. Visit our website or call 09 301 0101 for details. Some meetings are streamed live online. Visit aucklandcouncil.govt.nz/councillive for more information.

Auckland Transport

[AT.govt.nz](http://at.govt.nz)
09 355 3553 (24/7)
Roads, footpaths, public transport, parking and parking tickets, traffic signals and street lights.
09 366 6400
Public transport queries.

Watercare

watercare.co.nz
09 442 2222 (24/7)
Water and wastewater services.
If you have problems with your street drain, please phone the council.

Auckland Libraries

aucklandlibraries.govt.nz
09 301 0101 (24/7)

Auckland Leisure

aucklandleisure.co.nz
OurAuckland is printed on sustainably sourced paper.

Revaluation notices out in November

If you own property in Auckland you will receive a 2017 valuation notice in the post or via email in early November.

We know there will be a lot of interest in the new valuations, so here are some key things to remember:

- the capital value will reflect the most likely selling price had the property been sold on 1 July 2017
- revaluation is not linked to the total amount of rates collected by the council, but the capital

value of a property is used to help work out each property's share of rates

- revaluation will not affect your rates until the 2018/2019 rating year. Your current rates will stay the same until then.

There will be more on revaluation and what it means for you in the November edition of *OurAuckland*.

Visit aucklandcouncil.govt.nz/revaluation for more information.



LOCAL NEWS

Signs and footbridge celebrate Waterview Heritage Area

Waterview's history has come to life with new signs and a footbridge reflecting the area's past.

New signage at the Waterview Heritage Area is accessible from the Northwest cycleway, Great North Road and Waterview Reserve. It delves into the rich history of the area, which once housed a bustling village, brickyard, tannery, flax mill and a flour mill.

Waterview resident and Albert-Eden Local Board member Margi Watson says it's the perfect location for a history lesson.

"It's really interesting to see what Waterview and Te Auaunga / Oakley Creek looked like before housing, roads and motorways," she says.

"Thank you to the last custodians of the mill site – Peter McCurdy and Robyn Mason – for ensuring

the archaeological site was protected."

The footbridge crossing Te Auaunga is based on a 19th century bridge that spanned the creek.

It was completed by the NZ Transport Agency and the Well-Connected Alliance, with input from Albert-Eden Local Board, mana whenua and the local community.



Albert-Eden Local Board member Margi Watson at the Waterview Heritage Area.

Albert-Eden Local Board

@ albertedenlocalboard@
aucklandcouncil.govt.nz
☎ 09 623 6090
📍 aucklandcouncil.govt.nz/
alberteden
Peter Haynes (Chair)
@ peter.haynes@
aucklandcouncil.govt.nz

Puketāpapa Local Board

@ puketapapalocalboard@
aucklandcouncil.govt.nz
☎ 09 367 4301
📍 aucklandcouncil.govt.nz/
puketapapa
Harry Doig (Chair)
@ harry.doig@
aucklandcouncil.govt.nz

Ward councillors

Dr Cathy Casey
@ cathy.casey@
aucklandcouncil.govt.nz
☎ 027 474 4231
Hon Chris Fletcher, QSO
@ christine.fletcher@
aucklandcouncil.govt.nz

Working to solve homelessness

Albert-Eden-Roskill Councillor Cathy Casey is the keynote speaker at the upcoming Auckland event for World Homelessness Day.

The event is part of a global series to raise awareness of homelessness, and to share experiences and ways to improve the issue.

Councillor Casey is a long-time advocate for a national strategy to end homelessness. She says that it is an issue not just for central Auckland, but right across the region.

Puketāpapa Local Board Chair Harry Doig adds: "Homelessness is experienced in our community with people sleeping in cars and in other public places.

"There's also the hidden side of homelessness, with overcrowded homes and people sleeping on the floor. This is not what we want for our people."

Volunteers STEP up for the environment

Albert-Eden-Roskill Ward is fortunate to have beautiful places like Oakley Creek, the Roy Clements Treeway and Meola Creek.

However, with each of these natural landmarks there are important ecological issues that need careful stewardship.

The St Lukes Environmental Protection Society (STEPS) was established by volunteers to protect, educate and improve the environment around St Lukes.

Councillor Christine Fletcher says it's vital that community groups like STEPS exist.

"STEPS is focused on improving water quality, reducing pollution and aiding the quality of life for Aucklanders," she says.

The longstanding issue facing STEPS and Auckland Council is Meola Creek.

The creek has the biggest stormwater sewage overflow in Auckland, and this causes major environmental issues.

Albert-Eden Local Board and the



Cr Fletcher with members of STEPS and friends.

council's Healthy Waters team are working with STEPS to address these issues. Solutions include Watercare's Central Interceptor and other initiatives that will help restore the creek.

The local board also funds and works closely with STEPS on a range of projects, and allocates funding to help STEPS carry out weeding, restoration and planting projects along Meola Creek.

The board will partner with Waitemātā and Puketāpapa local boards, along with STEPS and other volunteer groups, to develop an integrated approach to managing the creek and protecting the underlying aquifer.

Visit meolacreek.org.nz to attend a planting day or to get involved with STEPS.

Festival lights up history of Puketāpapa

Historical tours, heritage trails, community days and photography exhibitions are some of the free events taking place in Puketāpapa during the Auckland Heritage Festival.

The 2017 Auckland Heritage Festival, which includes eight free events in Puketāpapa, runs from September 30 to October 15.

The theme is 'From waterways to motorways: the heritage of transport and travel in

Tāmaki Makaurau'.

Puketāpapa Local Board Chair Harry Doig encourages people to get out and enjoy the festival.

"There's a rich history surrounding Puketāpapa, and the Auckland Heritage Festival is a fantastic series of events that celebrates this area and the wider Tāmaki Makaurau region."

Visit heritagefestival.co.nz for more information and event details.



Tour the Pah Homestead turret during the Auckland Heritage Festival.

NOHO MĀMĀ
Live Lightly

9 ways we can make a difference today

Live Lightly shows the everyday lifestyle choices we can all make to save money, have a healthier life and care for our planet.

Visit livelightly.nz or follow us on Facebook for advice and tips on your travel, energy, food habits and purchases.

1. GET ACTIVE

Replace one trip a week usually taken by car with active transport like walking, cycling, or scootering. Visit at.govt.nz/cycling-walking to find cycleways and walkways near you.



2. SHARE YOUR WHEELS

Carpool once a week and save up to 20 per cent on petrol and parking. You'll also save time and hassle by letting someone else drive for a change. Register at auckland.smarttravel.org.nz or download the app and find a match.



3. LOVE FOOD, HATE WASTE

Plan your meals for the week and shop with a good list. You can even take a photo of your fridge or pantry with you. This way you'll end up using all of what you buy for your signature dish or new creation – check out lovefoodhatewaste.co.nz for foodie tips.



4. EAT IN SEASON

Plant a fruit tree, herbs or vegetable garden at home or in a shared space – perhaps at work or at a friend's place. If you can't, try to choose New Zealand-grown produce. Visit compostcollective.org.nz/auckland-community-gardens to find a community garden near you.



7. THINK BEFORE YOU BUY

Don't forget your reusable shopping bags and coffee cups: stash them in your car, your handbag, the basket of your bike, the pram, or where you leave your keys so you don't leave home without them.



5. BE WATERWISE

Shortening your shower time to four minutes could save up to \$180 per person per year.



8. GREEN UP YOUR BACKYARD

Plant native trees and shrubs to encourage wildlife back to your property. Visit aucklandcouncil.govt.nz and search 'plant to support your local ecosystem' for details.



6. KEEP WARM

Get efficient with energy: borrow a HEAT kit from your local library to check out the energy efficiency of your home and see where you could make improvements, like adding draught stoppers or insulation. See ourauckland.nz for details.



9. START A CONVERSATION

Chat about things that really matter with your friends; ask your local MP what their views are on climate change; and join the conversation whenever you can.



Take the Sustainable Whānau Challenge

14 OCTOBER – 11 NOVEMBER

The Sustainable Whānau Challenge is a great way to challenge yourself to eat better, make savings, get active or grow your own food. There are challenges for everyone, whether you want to take a small first step or stretch yourself beyond your comfort zone. Visit sustainablewhanauchallenge.com to sign up.

 Sustainable Whānau Challenge

Supported By  Kaipatiki Environment Centre Project



Living lightly every day



E-bike trial leads to commuter success

Auckland Council staff member Helena Barkman used to spend an hour getting to work on the bus. Since she switched to an e-bike in May, she's cut her commute to 18 minutes each way.

At first she wasn't sure if an e-bike was the right choice, so she tried one from the fleet of bikes Auckland Council provides for staff members to use on business trips around town.

After three days she was hooked, so she bought an e-bike of her own and now she's a dedicated e-commuter.

Getting to work is much less hassle for Helena these days. It's also more fun and it raises her heart rate enough to tick off her weekly aerobic exercise quota.

Environment a family affair

For Vanessa King and her son Matti, living lightly runs in the family.

Inspired by Vanessa's mother Nancy, they have made a series of small, sustainable changes in their lives to help reduce their carbon footprint.

They grow vegetables, keep chickens at home and buy food from local farmers' markets. To reduce their water use they keep a tank and save laundry water to use in the garden.

Vanessa says she owes her desire to make a difference to her mum.

"Ever since I was little I've been aware of the impact of our lifestyle choices. I've tried to reduce that impact so it works for my pocket and the environment.

"It's important to her and it's important to me."

Matti is taking after mum and granny, checking every product for palm oil when the family is shopping.

Vanessa and Matti have also signed up for the Kaipātiki Project's Sustainable Whānau Challenge. They'll start having four-minute showers and will borrow a HEAT kit from an Auckland Council library to find out what energy savings they can make at home.

See p6-7 to find out how you can sign up to the Sustainable Whānau Challenge, and for more ways to live lightly.



We're working to improve water quality



Water is one of our region's most precious assets. Auckland Council recognises the importance of improving water quality and creating a safe and healthy environment for everyone to enjoy.

Councillor Penny Hulse, who chairs the Environment and Community Committee, says the council is committed to cleaning up our harbours and waterways.

"Declining water quality is of huge concern to our community and we're committed to achieving a high-quality, safe and healthy environment for future generations," she says.

Auckland Mayor Phil Goff adds, "The council's vision is for a clean, green city that properly addresses the disposal of wastewater, improves the health of our streams

and harbours and reduces waste such as plastic bags."

In November, Auckland Council is launching Safeswim, an environmental monitoring system that will test the water quality of beaches so Aucklanders know when they are safe to swim at. Look out for our feature on Auckland's water in next month's edition of *OurAuckland* to learn more.

Get Ready Week

Emergencies can happen anywhere, at any time, and without warning.

Get Ready Week, which runs from October 9 to 13, is a great time to think about what you might do in an emergency.

The theme this year is 'Stay Safe, Stay Informed'.

Visit aucklandcivildefence.org.nz to find out more, including:

- how to sign up to receive alerts via the Red Cross Hazards app,

text and email

- which radio stations and social media to check in an emergency
- how to get prepared for an emergency at home, at work or at school.

Get Ready Week 2017 is run by the Ministry of Civil Defence & Emergency Management and supported by Auckland Emergency Management.

IN AN EMERGENCY
STAY SAFE
STAY
INFORMED

Pest of the month

African clubmoss

African clubmoss is a serious pest that can spread quickly, smothering other plants and preventing the development of native seedlings.

It has small, shiny, green leaves that are 2mm to 4mm long and thickly bunched on short stems.

It thrives in damp, shady sites and can form a dense groundcover that can easily take over large

areas of your garden.

"Left unchecked it can spread to nearby bush and smother native seedlings," says Rowena Gilchrist, pest plant advisor.

"You should control it as soon as you see it."

African clubmoss reproduces via spores, but stem fragments take hold wherever they drop and can

be spread by footwear, machinery and animals.

Small infestations should be raked out or hand-pulled, removing the top 2cm to 3cm of soil to avoid leaving spores behind.

Larger infestations can be sprayed.

Visit aucklandcouncil.govt.nz/plantsearch for details.



Photo: Philip Bendle

Lua and Jenny (right) are some of the local heroes who are encouraging Aucklanders to keep their communities beautiful.

Lua, a mum of two and an early childhood teacher, is passionate about teaching people in her community how to reduce rubbish and always put it in the right place.

"I don't like seeing rubbish dumped in our streets, parks or waterways," says Lua.

"It's up to all of us to look after our community so it is clean and safe for our children to play in.

"I used to produce a lot of rubbish until I learnt how much ends up in landfill – I was shocked! I started to recycle and realised how small changes can make a big difference."

'We are the Beautiful People of Auckland' has a free helpline you can call to get advice and support if your rubbish bin gets too full or if you need help reducing waste.

If you live in south Auckland call **0800 4684 3246** and one of our waste advisers will be on hand to help.



Puhinui Stream Forest Trail

The Puhinui Stream Forest Trail is a tranquil escape from urban Auckland. It's just 25 minutes' drive from the city and five minutes from central Manukau.

The trail links Tōtara Park to the Auckland Botanic Gardens. It winds along Puhinui Stream and through lush forest where many native trees flourish, including kauri, pūriri, tōtara and nīkau.

You can walk the full length of the trail (approximately two hours, so bring good walking shoes), or take a shorter walk by choosing parts of the trail. There are entry points at the Auckland Botanic Gardens, Everglade Drive, Nyssa Place and Wairere Road.

For more information and to download a map, visit ourauckland.nz and search 'Puhinui Stream Forest Trail'.

Take the **Puhinui Stream Challenge**
Sat 28 October, 9.30am-2.30pm.
Hayman Park, Manukau to Tōtara Park, Manurewa.

A free, non-competitive event open to walkers and runners of all ages and abilities. Visit ourauckland.nz/events for more information.

FREE

DID YOU KNOW?

Take a free composting workshop with the Compost Collective

You might not realise it, but to 40 per cent of what we throw out is food waste and another 10 per cent is garden waste.

The Compost Collective is here to teach you how to put that goodness back in your garden instead of sending it to landfill.

Auckland Council funds free workshops through the Compost Collective, where you can learn about three different systems – bokashi, worm farms and compost bins. By attending a workshop you can also get \$40 off the system of your choice.

Visit compostcollective.org.nz for more information and to book a workshop.



Auckland Council funds free workshops where you can learn about composting.



170+ free or low-cost events

Hit the streets and waterways to discover the stories and secrets of Auckland's heritage this spring. Visit the website above or pick up a programme from your local library for event details.



Check out the free **Duruje Festival & K-Pop Contest** on Sat 7 Oct, 2pm-9pm in The University of Auckland Quad with Korean food, games, performing arts and more. There are also six free films (with English subtitles) including Netflix's *Okja* (2017) at the **Korean Film Festival** from 19-22 Oct at Academy Cinemas.



Tempo Dance Festival

4-15 Oct

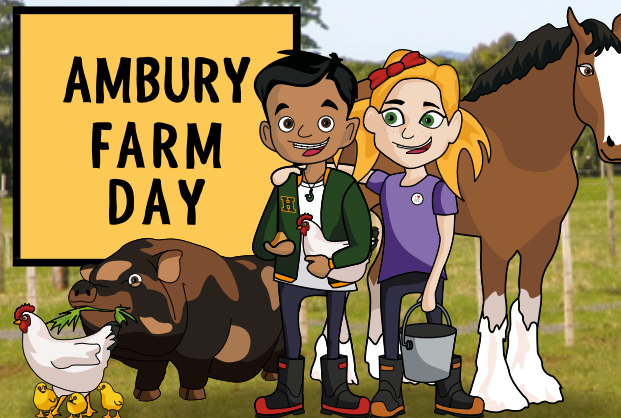
Q Theatre, Aotea Square, Wellesley Studios & Bruce Mason Centre

Prices vary – some free events

This annual festival features more than 40 events including ticketed shows, free public performances, and artist talks and demonstrations.



AMBURY FARM DAY



Sun 8 Oct, 10am-4pm

Ambury Regional Park, Māngere Bridge

Give the kids a taste of life on the farm at this fun family day out. There'll be adorable animals, sheep shearing, farm rides, delicious food for sale and more.

FREE ENTRY

SPRING School Holidays

Visit ourauckland.nz/schoolholidays for more information about these and other school holiday events.



Mrs Wishy-Washy by Joy Cowley
30 Sep - 14 Oct
PumpHouse Theatre, Takapuna
\$19.50-\$25 (+ fees)

Clay Exploration
2-14 Oct
Māngere Arts Centre – Ngā Tohu o Uenuku

FREE

Survive 24!
30 Sep - 15 Oct
Auckland Libraries Region-wide

FREE



NZ's National Gem, Crystal, Fossil & Mineral Show
6-8 Oct
North Shore Events Centre, Wairau Valley
Child \$2, adult \$5, family \$10



Spots & Stripes
30 Sep - 15 Oct
Auckland Zoo, Western Springs
Zoo entry fees apply



Holiday Art Programme
6-13 Oct
Uxbridge Arts & Culture, Howick
From \$39 per workshop

On the Right Track: Auckland Transport Through Time
30 Sep - 15 Oct
MOTAT, Western Springs
MOTAT entry fees apply



Tom's Marvellous Imagination
9-14 Oct
TAPAC Theatre, Western Springs
\$15, family \$55 (+ fees)



Mission Possible
2-13 Oct
Stardome Observatory & Planetarium, Epsom | Child \$12, adult \$10



Time to Serve: Soldier or Stretcher Bearer
9-15 Oct
Auckland Museum, Parnell

FREE

Knot Touch
2-13 Oct
NZ Maritime Museum, CBD
\$5



Dirt & Other Delicious Ingredients
11-14 Oct
Bruce Mason Centre, Takapuna
Child \$18, adult \$22 (+ fees)



27 Oct - 3 Nov | Warkworth | Prices vary – some free events

Kowhai Festival includes the free outdoor **Movie Night: Ghostbusters** (1984) on Fri 27 Oct, 7pm-10pm, as well as the free **Huge Day Out** on Sat 28 Oct, 9am-6pm with food and market stalls, a garden bar, kids' activities, live music, a dog show and much more.

HALLOWEEN

Visit ourauckland.nz/halloween for more information about these and other Halloween events.



Halloween Trick or Treat
Sat 28 Oct, 11am & 2pm and Sun 29 Oct, 11am
Aotea Centre, CBD
Adult \$19, child \$16, family \$60

Witches & Wizards Day
Sun 29 Oct, 12.30pm-4pm
Highwic, Epsom
Adult \$10, child \$5

Bayswater Halloween Trail
Fri 27 Oct, 5pm-7pm
Bayswater Park, Bayswater

FREE



The Dunstan Creek Haunting
24-31 Oct, times vary
Aotea Centre, CBD
\$20-\$35 (+ fees)

Haunted Olde Hallows Eve

Sat 28 Oct, 7pm-11pm
MOTAT, Western Springs
From \$20 (+ fees)

Experience an array terrifying mazes, ghostly tales and spook-tacular live entertainment ... if you dare.



WIN with OurAuckland

We've got six family passes to give away. Visit ourauckland.nz/win to enter by noon on Fri 20 Oct 2017. Terms & conditions apply.

WIN



WHAT'S ON

October 2017

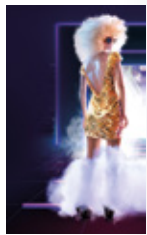
Visit ouraukland.nz/events for more info, hundreds more events and to sign up for our weekly e-news.

Until 5 Nov Pleasuredome The Musical

An immersive 80s musical experience

Tue-Sat 8pm-10.30pm,
Sun 6pm-8.30pm

Pleasuredome, Avondale | From \$25 (R18)



Until 12 Nov The 26th Annual Wallace Art Awards

An exhibition of finalists for NZ's largest annual contemporary art awards

Tue-Fri 10am-3pm,
Sat & Sun 8am-5pm

Pah Homestead,
TSB Bank Wallace Arts Centre, Hillsborough



Paramount Award trophy by Terry Stringer

1 Oct Festival Italiano

Italian culture, music, art, design & food

Sun 11am-4pm

Osborne St, Kent St & Rialto Centre, Newmarket

6-8 Oct BlackHawk 2017 National Dog Show

New Zealand's top dogs compete for Best in Show

Fri-Sun 9am-4pm

Vodafone Events Centre, Manukau

Adult \$10, child \$5



7-15 Oct The 31st Trusts Art & Sculpture Awards Exhibition

An exhibition showcasing some of NZ's best artists

10am-4pm daily

Corban Estate Arts Centre, Henderson

8, 13 & 19 Oct SKYCITY Breakers NBL October Home Games

Live sporting action & halftime events

Sun 8 Oct (vs Cairns Taipans),
Fri 13 & Thu 19 Oct (vs Sydney Kings)

Spark Arena, CBD | Adult from \$18.50,
junior from \$12.50, family from \$55



11-22 Oct The Play That Goes Wrong

A play guaranteed to leave you aching with laughter

ASB Waterfront Theatre, Wynyard Quarter

From \$84.90



Photo: Jeff Busby

14 Oct Kids Art Day

The biggest arts event for children in east Auckland

Sun 11am-2pm

Uxbridge Arts & Culture, Howick

20 Oct Franklin Positive Ageing Expo

A family-friendly event with exhibitors & entertainment

Fri 9.30am-2.30pm

Indian Hall, Pukekohe



21-23 Oct Auckland Brick Show

3000m² of LEGO® on display over Labour Weekend

Sat-Mon 9am-5.30pm

The Trusts Arena, Henderson

Online \$7, door \$10



25-27 Oct InterACT Festival

An amazing arts festival for people with disabilities

Wed-Fri 10am-2pm

Corban Estate Arts Centre, Henderson

25 Oct - 4 Nov Te Pō

A mesmerising portrayal of love lost & found again

Q Theatre, CBD | From \$25 (+ fees)



27 Oct Monster Fireworks Display

A family night of fireworks, food stalls, rides & more

Fri 5pm-10pm (fireworks 8.45pm)

Kumeu Showgrounds

Adults \$15, seniors/kids \$5, family \$35

28 Oct Sandringham Street Festival

Food stalls, music, kids' entertainment & more

Sat 9am-4pm

Sandringham Village

28 & 29 Oct The Very Vintage Day Out

Shopping, entertainment & more – visit ouraukland.nz/win to win a weekend double pass (closes Fri 13 Oct, noon)

Sat 10am-6pm,

Sun 10am-4pm

Shed 10, Queens Wharf, CBD

Day pass \$24, weekend pass \$38 (+ fees)



AOTEA SQUARE | 14-15 OCT 2017

DIWALI FESTIVAL

FREE

Light up your life

- MUSIC
- DANCE
- FASHION
- FOOD
- CRAFT

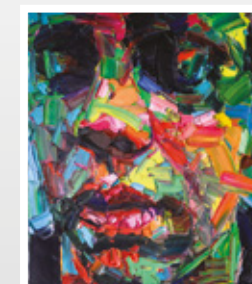
Sat & Sun 12pm-9pm

This free, family-friendly festival offers the flavours, sights and sounds of Indian culture in the heart of Auckland. There's music, dance, street theatre, food and craft stalls, kids' activities and the Radio Tarana Bollywood Dance Competition. The two-day event ends with a fireworks display on Sunday night.

ARTWEEK

7-15 Oct | Region-wide

Explore Auckland's amazingly diverse art world with exhibitions, tours, talks and workshops at more than 100 venues across the region.



Jack Trolove Exhibition – 26 Sep - 21 Oct at Whitespace, Ponsonby



Late Night Art in the Heart of the City

Tue 10 Oct, 5pm-9pm | CBD

Galleries will be open late and there will be guided walking and cycling tours and live art events.

TEAM WELCOME

RUGBY LEAGUE
WORLD CUP
2017

Wed 25 Oct, 12pm-4pm

Karanga Plaza, Wynyard Quarter

Welcome the NZ and Samoan teams to Auckland for the Rugby League World Cup 2017. There'll be music, performances, skills and drills, player signings, chances to have selfies, face painting, waka races and more.



From 26 Oct to 2 Dec, cities across NZ, Australia and Papua New Guinea will host the RLWC 2017. Auckland is hosting two matches at Mt Smart Stadium – NZ v Samoa on Sat 28 Oct and a semi-final on Sat 25 Nov.

TŌ TĀTOU TĀMAKI MAKĀURAU OUR AUCKLAND

Whiringa-ā-nuku October 2017 | 74

Diwali Festival

**School holidays
Halloween**

ALBERT-EDEN-ROSKILL WARD

